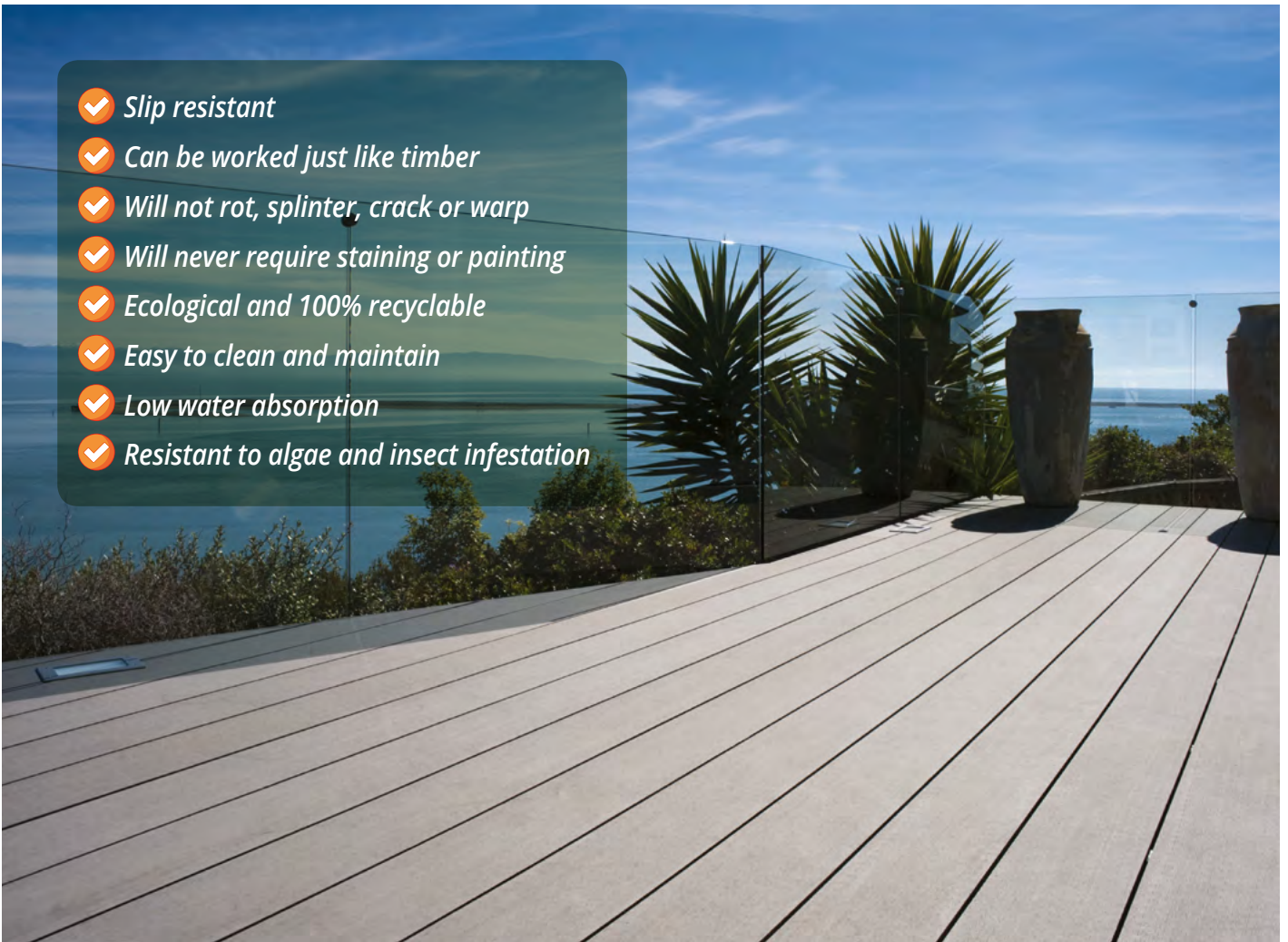


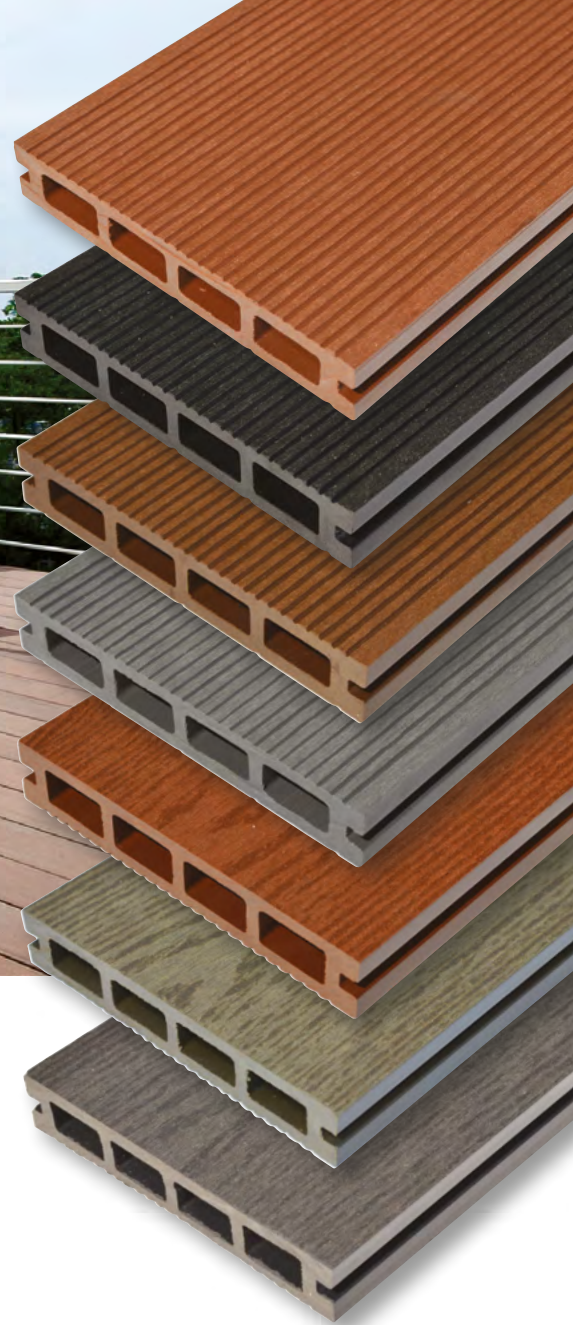


TRANSFORM YOUR GARDEN
WITH COMPOSITE DECKING

RockWOOD 
WOOD PLASTIC COMPOSITE

- ✓ *Slip resistant*
- ✓ *Can be worked just like timber*
- ✓ *Will not rot, splinter, crack or warp*
- ✓ *Will never require staining or painting*
- ✓ *Ecological and 100% recyclable*
- ✓ *Easy to clean and maintain*
- ✓ *Low water absorption*
- ✓ *Resistant to algae and insect infestation*





ROCKWOOD WPC DECKING

The modern alternative to traditional timber deck boards.

Wood plastic composite (WPC) is a relatively new environmentally friendly material that utilises wood waste and recycled plastic to produce a range of attractive decking boards which combine the appearance of real hardwood with outstanding durability.

Unlike timber decking, Rockwood WPC has a low water absorption rate, will not rot, splinter, or require the expense of ongoing painting or staining treatments to retain its attractive appearance. It is resistant to attack by insects, does not promote algae growth, mould or fungus - and importantly, will not become slippery when wet.

Rockwood has the ability to transform any garden, patio, pool surround, walkway, roof garden or balcony - its outstanding longevity also make it an ideal choice for commercial landscaping, aquatic and riverside installations. With only minimal maintenance, Rockwood WPC decking provides the end user with a robust solution to the age old problems associated with timber decking - providing years of trouble free use.

Rockwood decking is available in a variety of attractive colours and surface finishes.

All decking boards feature a narrow spaced, anti-slip grooved surface to one side - our standard range has the option of a wider spaced groove to the reverse whereas the reverse of our wood grained board imitates the natural appearance of timber.

10 Year Guarantee.

Rockwood is manufactured to a high standard and specification and is covered by a 10 year limited warranty against material defects - however, when correctly installed under normal conditions we expect Rockwood to have a useful lifespan in excess of 25 years.

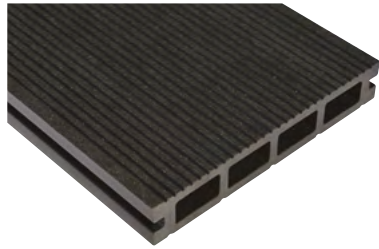
Available in-store, or online at: www.rockwoodwpc.co.uk



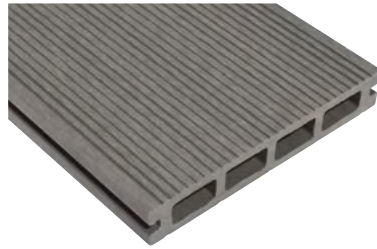
STANDARD WPC DECKING BOARD

Rockwood standard 150mm x 25mm WPC decking is available in 3600mm, 2900mm and 2200mm board lengths in 4 attractive colours.

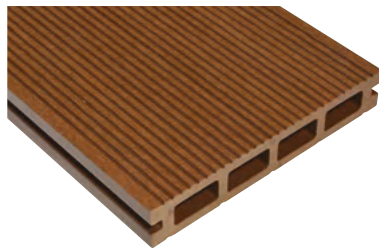
'Dual faced' the standard decking boards feature a tight narrow groove to one side, and a wider spaced grooved finish to the reverse - effectively offering two choices of deck finish from just one board.



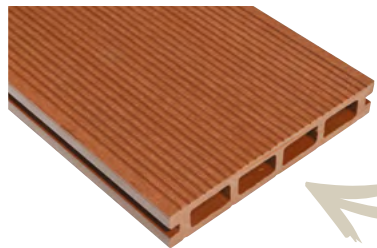
Charcoal



Light Grey



Dark Brown



Brownish Red



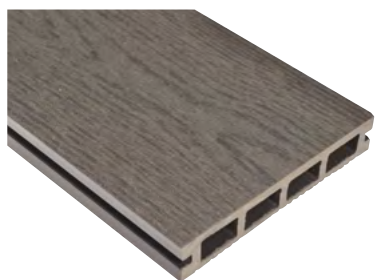
Reverse side



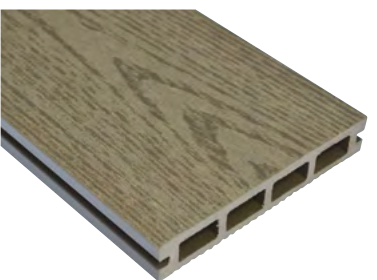
WOODGRAIN WPC DECKING BOARD

With an external surface engineered to faithfully replicate the grained effect of natural timber.

Rockwood woodgrain 140mm x 25mm WPC decking is available in 2900mm board lengths in 3 board colours.



Graphite Grey



Forest Green



Autumn Brown



Prices available at: www.rockwoodwpc.co.uk



WPC FINISHING SKIRTING

WPC skirting trim for creating for general finishing and detailing.

2900mm x 73mm x 12mm

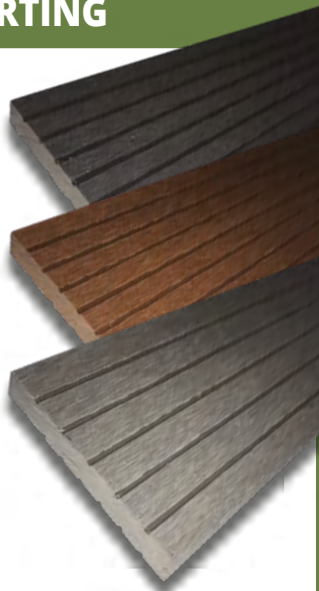
Charcoal, Light Grey, Dark Brown, Brownish Red, Graphite Grey, Forest Green & Autumn Brown.

2900mm x 55mm x 10mm

Charcoal & Dark Brown.

2200mm x 55mm x 10mm

Light Grey & Brownish Red.



WPC FINISHING ANGLE

WPC angle for creating a neat junction at the end of a decking run or general finishing.

2900mm x 62mm x 37mm

Charcoal, Light Grey, Dark Brown, Brownish Red, Graphite Grey, Forest Green & Autumn Brown.



WPC HOLLOW JOIST

WPC hollow joists to support decking when installing over concrete sub floors.

2900mm x 50mm x 30mm

2200mm x 50mm x 30mm

Charcoal



CLIPS & FIXINGS

Rockwood is supplied with a range of fastening clips and fixings to ensure a trouble free installation.

Stainless Steel Jointing Clip



Stainless Steel Finishing Clip



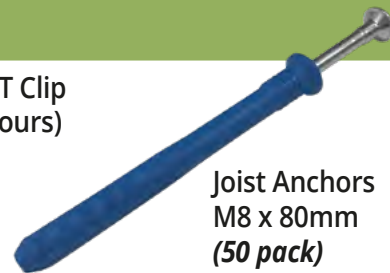
Stainless Steel Starter Clip



Nylon T Clip (all colours)



Joist Anchors M8 x 80mm (50 pack)



Stainless Steel Screw M4 x 35mm C/Sunk (100 pack)

Stainless Steel Screw M4 x 30mm C/Sunk (100 pack)

Stainless Steel Screw M4 x 35mm Spax (100 pack)



ROCKWOOD WPC FENCING - AVAILABLE SOON...

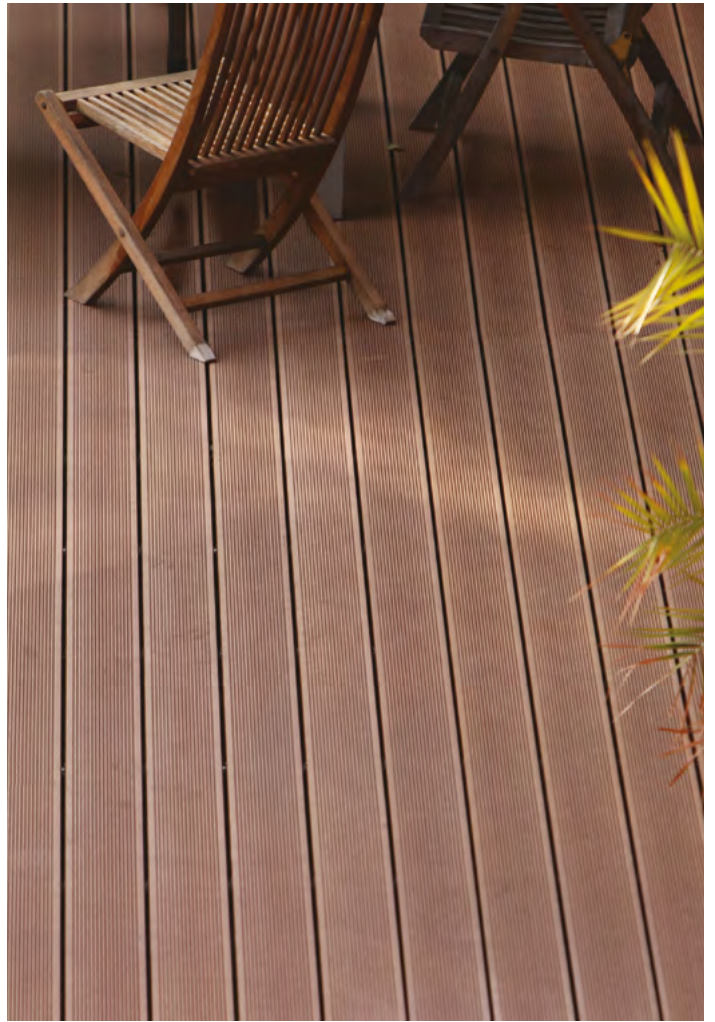
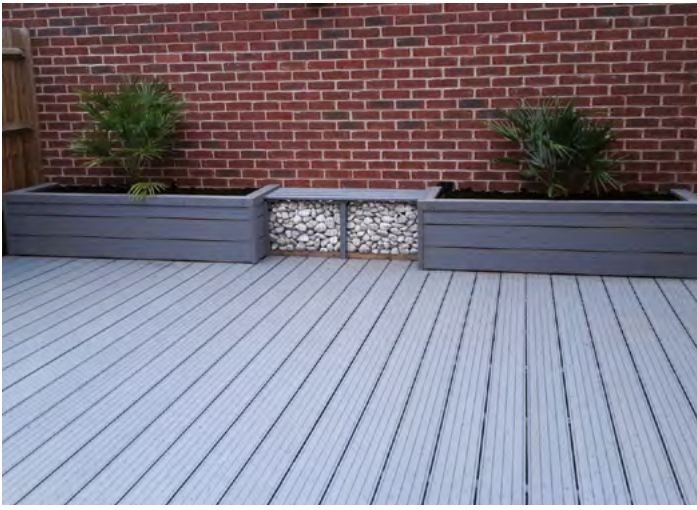
Rockwood WPC fencing is the perfect addition to any garden.

Designed to compliment our WPC decking, Rockwood fencing is available in a variety of colours. Simple to install, the strong Rockwood WPC fencing components feature exactly the same low maintenance attributes of our WPC decking.



Prices available at: www.rockwoodwpc.co.uk







WPC FITTING GUIDANCE NOTES



We would recommend you employ a professional builder/ carpenter who is familiar with working with WPC Products to install your WPC Decking.

Before commencing any installation, you/your contractor should read and follow the advice/instructions we have provided below. If you are unsure about any point – please contact our Sales Office on 024 7601 7011 before purchasing or commencing your installation.

STORAGE

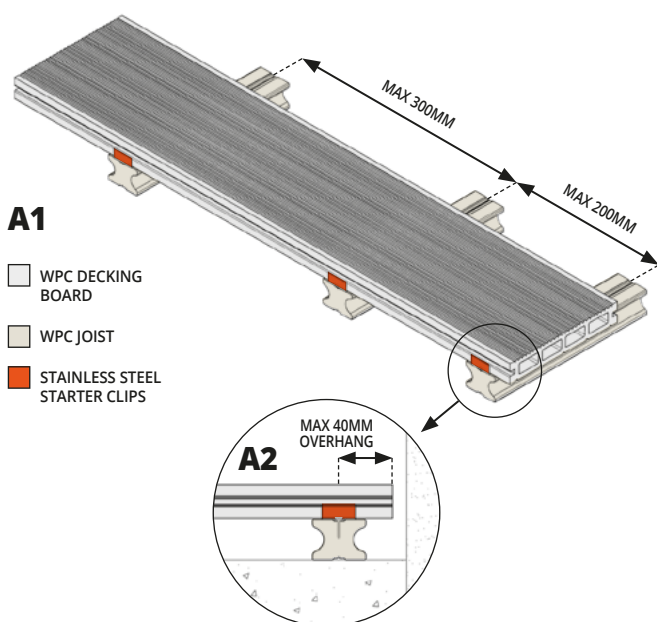
To allow for acclimatisation before first use, WPC Decking Boards should be stored (in the area they are to be installed) on a flat horizontal surface, covered from the elements for a period of 24hrs -48hrs.

INSTALLATION

Sub Frame

WPC Decking Boards can be installed on WPC joists (where joists are fixed directly to a concrete base) or pressure treated/tanalised timber sub frames. When using either method, the maximum centre distances of the supporting joists must be no greater than 300mm.

The second and penultimate joists should be installed at a distance no greater than 200mm from the first and last joist to provide the decking with additional support around its perimeter. The first joist should be positioned to ensure the decking boards do not overhang the joist by more than 40mm. (See Diagrams A1 & A2).

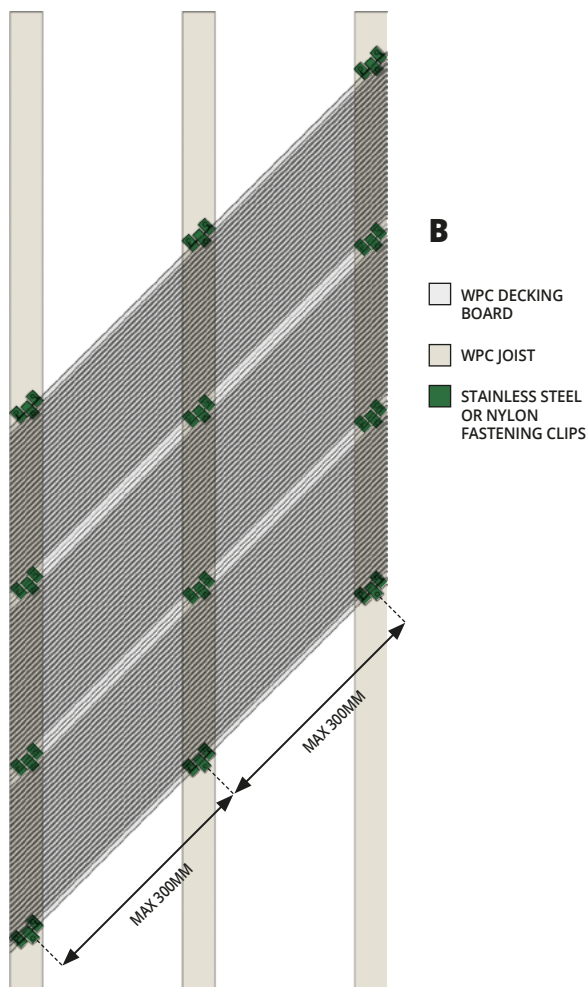


When using WPC Decking Joists on a concrete base the min. thickness of base should be 100mm. WPC joists should be secured down to the concrete every 500mm with appropriate joist anchors.

On longer runs, where any 2 or more WPC Joists butt up, a small gap should be left between joist ends to facilitate drainage. This small gap should also be included where any WPC Joist butts up to any wall or fence.

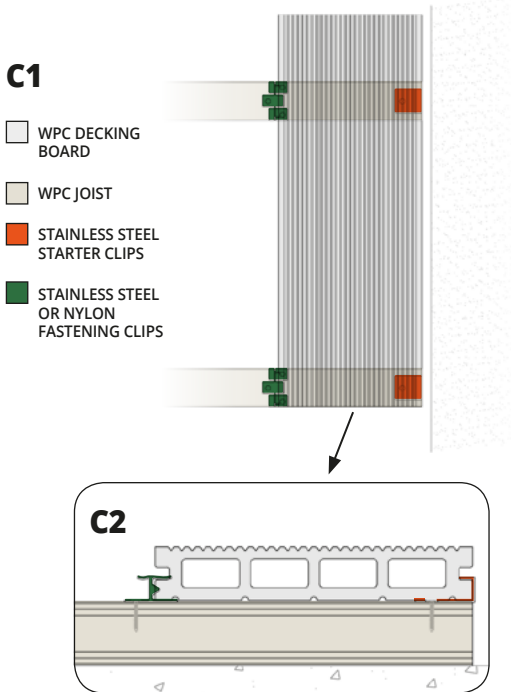
Each WPC Decking Board, irrespective of length, should be supported by a minimum of 3 joists with a maximum centre distance of 300mm. For walkways and other areas of heavy footfall, a minimum of 4 joists must be used.

If the WPC Decking Boards are to be installed at an angle other than 90 degrees to the joists, then the centre distances of the joists should be reduced accordingly. Joist centres should be reduced to ensure the maximum supporting distance (when measured along the line of the WPC Boards) does not exceed 300mm. (See Diagram B).

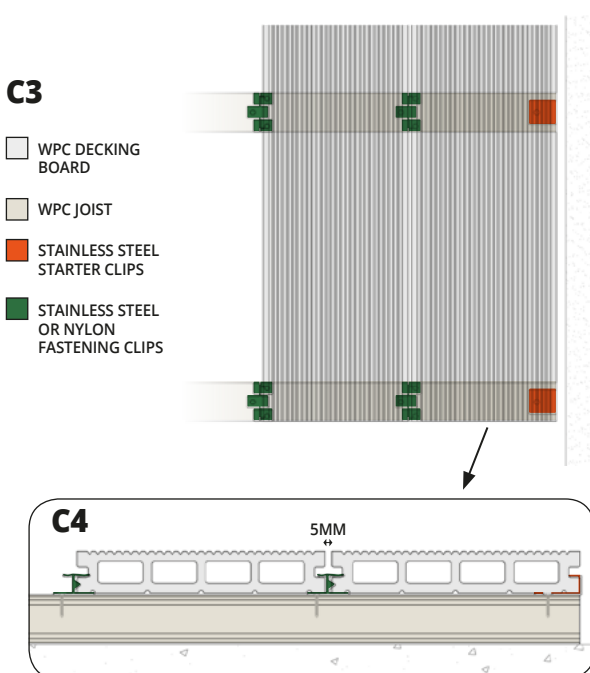


WPC Decking Boards

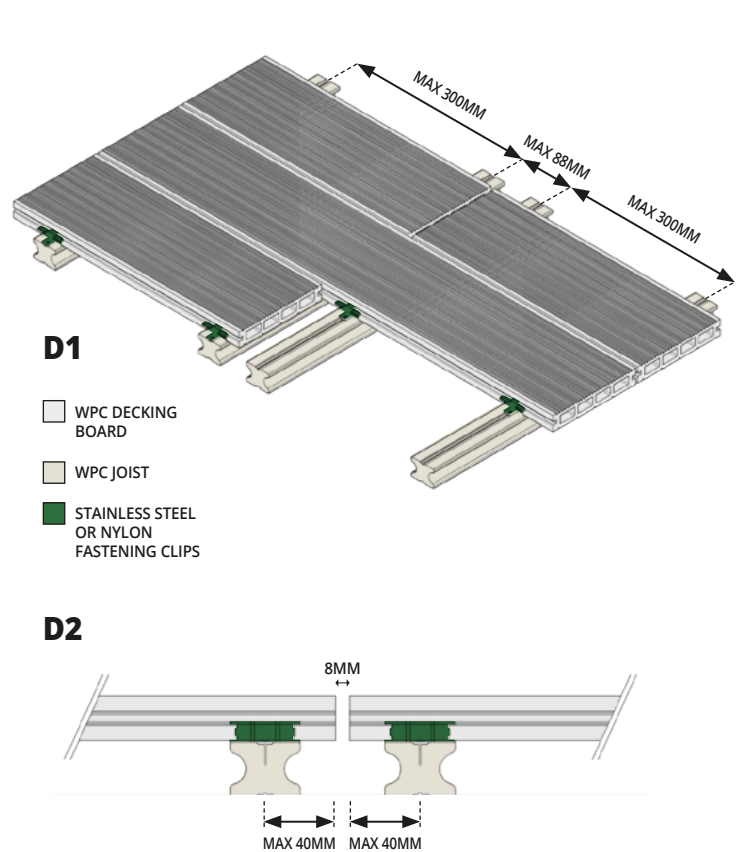
A row of Stainless Steel Starter Clips should be fitted to each and every Joist. The leading edge of the first row of WPC Decking Boards should then be inserted into them. Joining Clips (Stainless Steel or Nylon) are then pushed into the groove on the opposite side of the WPC Board and secured to each and every joist. (See Diagram C1 & C2).



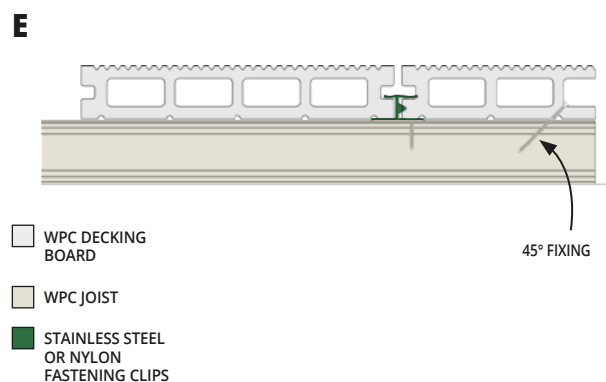
All subsequent rows of WPC Boards are then inserted into the previous joining clip and again secured with more joining clips on each and every joist. When installed correctly, the standard fixing clips will provide a gap of 5mm between each board. (See Diagram C3 & C4).



On larger decked areas where it is necessary to join/butt two or more WPC Boards in length, a process of double joisting should be adopted. Observing the maximum recommended overhang of 40mm, each board should be secured with a separate joining clip, with an 8mm gap included between boards for expansion (See Diagram D1 and D2).

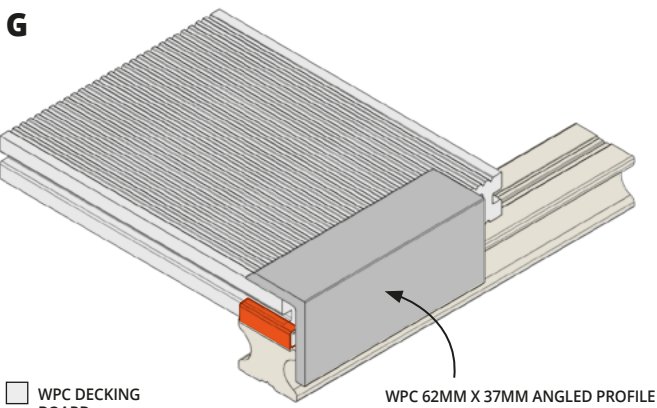
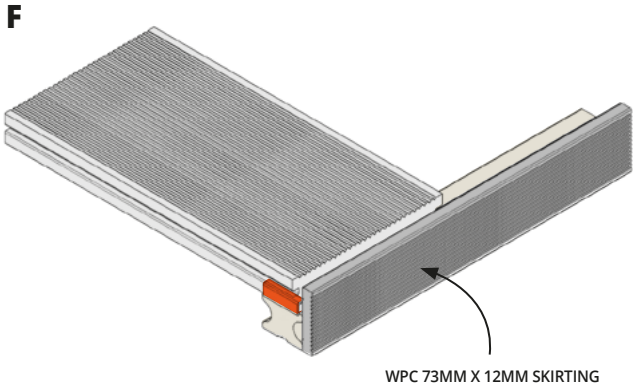





The final deckboard of the installation (whether it is a full or cut to width board) should be secured to the joists by first drilling a pilot hole at 45 degrees through the lower portion of the deck board into the joist. The deck board should then be fixed to the joist with a 50mm long stainless steel screw of suitable gauge (See Diagram E).



Finishing

Rockwood supply a range of WPC Finishing Profiles to compliment the final installation. The most popular of these are the 73mm x 12mm solid Skirting Profile and the 62mm x 37mm Angled Profile (See Diagrams F and G).



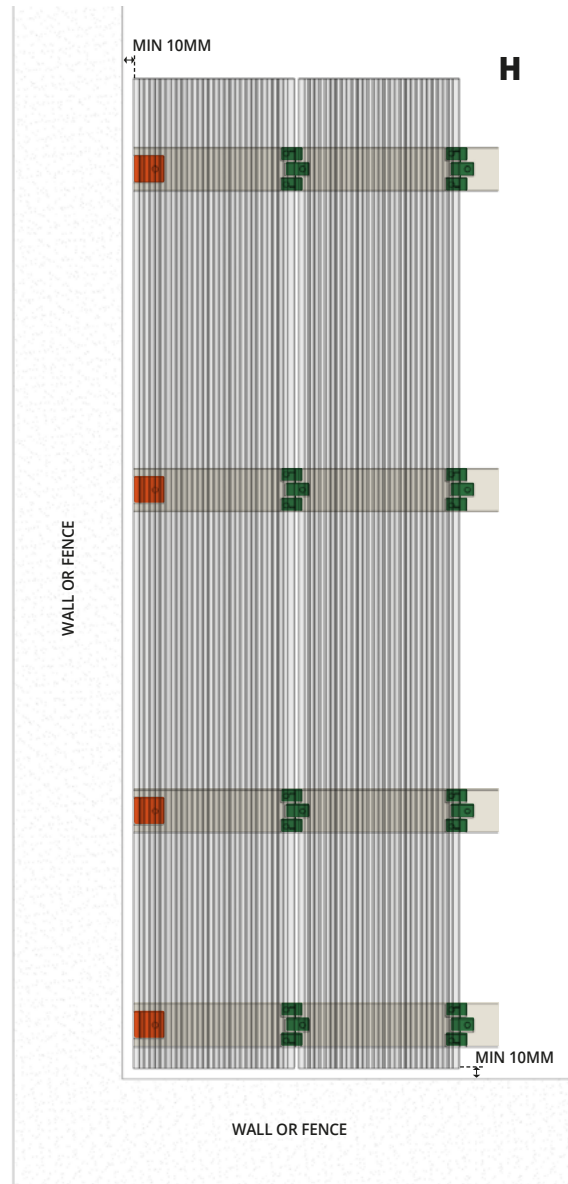
-  WPC DECKING BOARD
-  WPC JOIST
-  STAINLESS STEEL STARTER CLIPS





After predrilling a pilot hole, both profiles are simply fixed directly to the joist with a min. 50mm long stainless steel screw of suitable gauge.

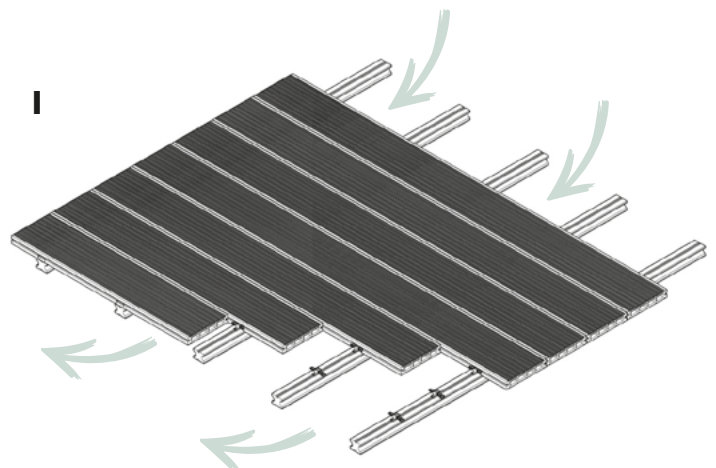
EXPANSION & VENTILATION

WPC is a combination of wood and plastic and therefore some expansion and contraction will occur. This expansion can be up to 3mm/mtr depending upon the environment. It is important to leave expansion gaps of a min. 10mm around the complete perimeter of the installation (See Diagram H)

To prevent any excessive build-up of heat within the area of the sub-frame, it is also recommended that an appropriately sized gap is left under the finished decking installation to allow the flow of air through this area. (See Diagram I).



-  WPC DECKING BOARD
-  WPC JOIST
-  STAINLESS STEEL STARTER CLIPS
-  STAINLESS STEEL OR NYLON FASTENING CLIPS



GENERAL NOTES

Rockwood decking can be secured with both stainless steel and nylon fixing clips. Should any part of the decking installation require removing for access (manholes, electrics etc.), then nylon fixings clips should be utilised across the complete decking installation.

WPC is a part natural product and as such its initial colour will uniformly lighten upon exposure to the UV rays of sunlight. This will stabilise in around 8/10 weeks.

Clearance holes should be used where necessary and where screws/pins are to be used, pre-drilling of the WPC is recommended.

The installation of WPC is not recommended where the outside temperature is below 5 deg C.

Rockwood is also available in a range of standard profiles to enable the construction of perimeter railings and balustrades to compliment your decking - for further information please contact our sales office on: 024 7601 7011

All information is given in good faith and for general help and guidance - since details and designs are likely to vary from project to project, it cannot be assumed that this information is suitable for each and every application. Therefore, if there is any doubt, please contact us before starting your project.

CARE AND MAINTENANCE OF WPC PRODUCTS

During the transportation and installation of the WPC products, care should be taken to avoid dropping or impacting the items so as not to cause any damage.

WPC Decking Boards and accessories require minimal ongoing maintenance. This is especially true when compared to traditional wooden decking.

We recommend that you regularly sweep the WPC Decking area to remove any build up debris. Failure to do so could result in the unsightly appearance of mould or algae deposits.

In order to maintain the good looks of your WPC Decking area, we would recommend periodic cleaning with a stiff brush and a mild cleaning solution. The area should then be rinsed down with either a hosepipe or Low/Medium pressure jet washer (Max. 80 Bar).

***** PLEASE NOTE - ROTATING HEAD CLEANING EQUIPMENT SHOULD NEVER BE USED *****

Any contamination by Grease or Oil should be treated immediately with an appropriate cleaning agent and then be rinsed down as above.

Should any contamination occur from trees or plants, this should be treated with a solution of bleach and water (10% bleach and 90% water). Followed by a good rinsing as above.

***** SOLVENT BASED MATERIALS SHOULD NEVER BE USED *****







Quick to fix, the WPC deck boards are easy to handle, can be worked just like timber and do not require any specialist tools to install.

Boards are simply secured to a suitable sub structure with hidden stainless steel or nylon fastening clips which leave the deck surface free from unsightly fixing screws.

The installation can be complimented by a range of matching finishing profiles and perimeter balustrades.

Alternatively, if you would like to speak with an expert about a particular project or application please contact us on **Tel: 024 7601 7011**



Call: 024 7601 7011
www.rockwoodwpc.co.uk
Email: info@rockwoodwpc.co.uk

**Rockwell House, Birmingham Road,
Millisons Wood, Nr Meriden, Coventry CV5 9AZ**

